

Looking Northeast towards the North pinnacle of Strawberry Reservoir.



North side of property is the Forest Service with a meandering walk down to the shoreline.

Cabin built in 1997 with its effective age of 2007. Well loved and cared for. Exterior 9" logs, wood interior: walls, ceiling, floors.

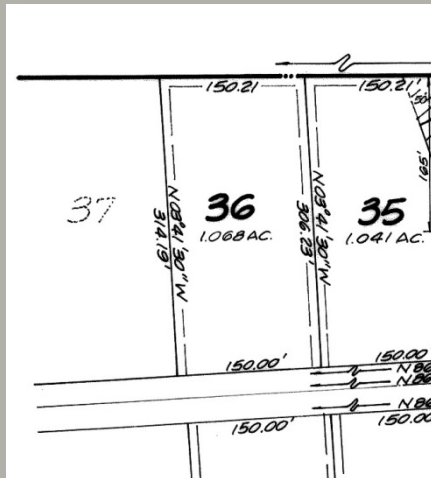


From the loft looking through upper windows to the East. Large double pane windows provide tons of Sunlight.

Downstairs is another family room, with two bedrooms and a large storage / utility room.
Painted bright clean white
This room is waiting for your special touch.



Your fire pit sits behind the cabin looking NW towards the mountain and NE towards the lake.
The Forest Service serves as your North boundary to ensure that privacy is protected in the future.



www.StretchYourDream.com

FOR SALE

\$234,900

OPEN HOUSE July 24th Weekend!
Seller will look at all offers!



A great opportunity for an ever enlarging family. This 9" log cabin offers an open floor plan with space to really setup camp. Sunlight flows from side to side and ends up on the large rear deck and skips like a rock on water to highlight the fire pit crackling with coals. Very flexible floor plan, including a loft and finished basement.

THUNDER RIDGE REAL ESTATE LC

435-828-8824 . Eileen Anderson-Warner

