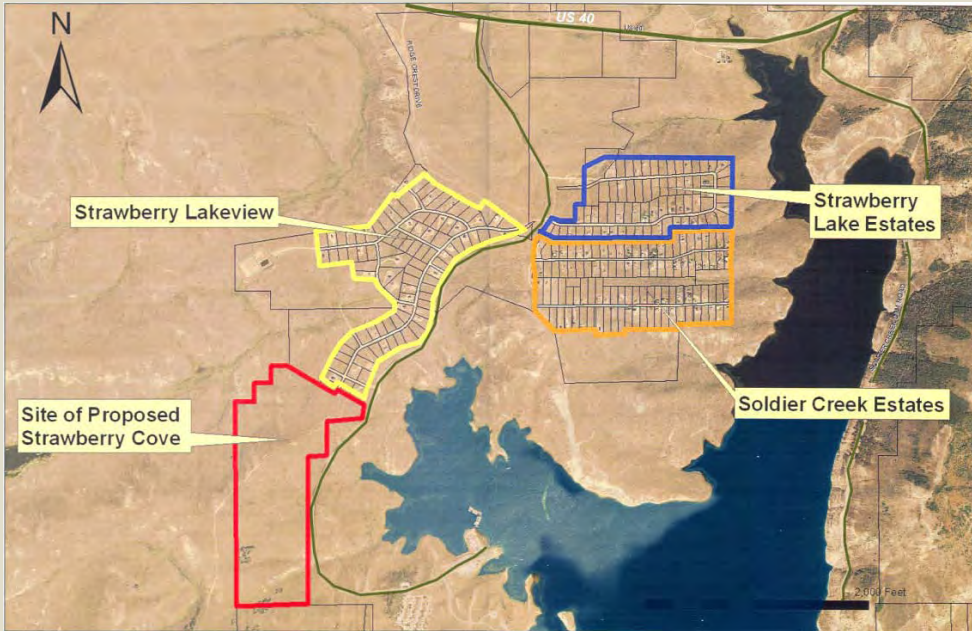


Hwy 40, East of Heber City UT



North



South



East



West



SOLDIER CREEK ESTATES **LOT 11A**



\$85,000

*With a view of lake, 1 acre, year-round water, power,
snowmobile access in winter*

Great Community, Locked Gate

Thunder Ridge Real Estate

www.StretchYourDream.com

435-828-8824

